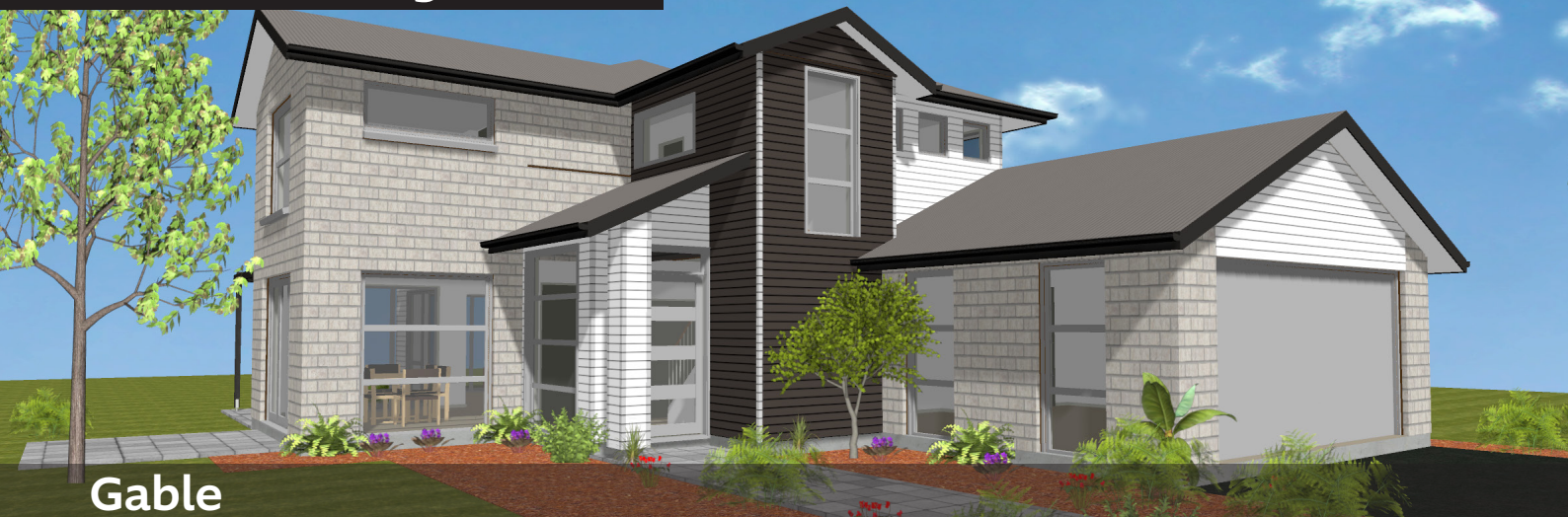
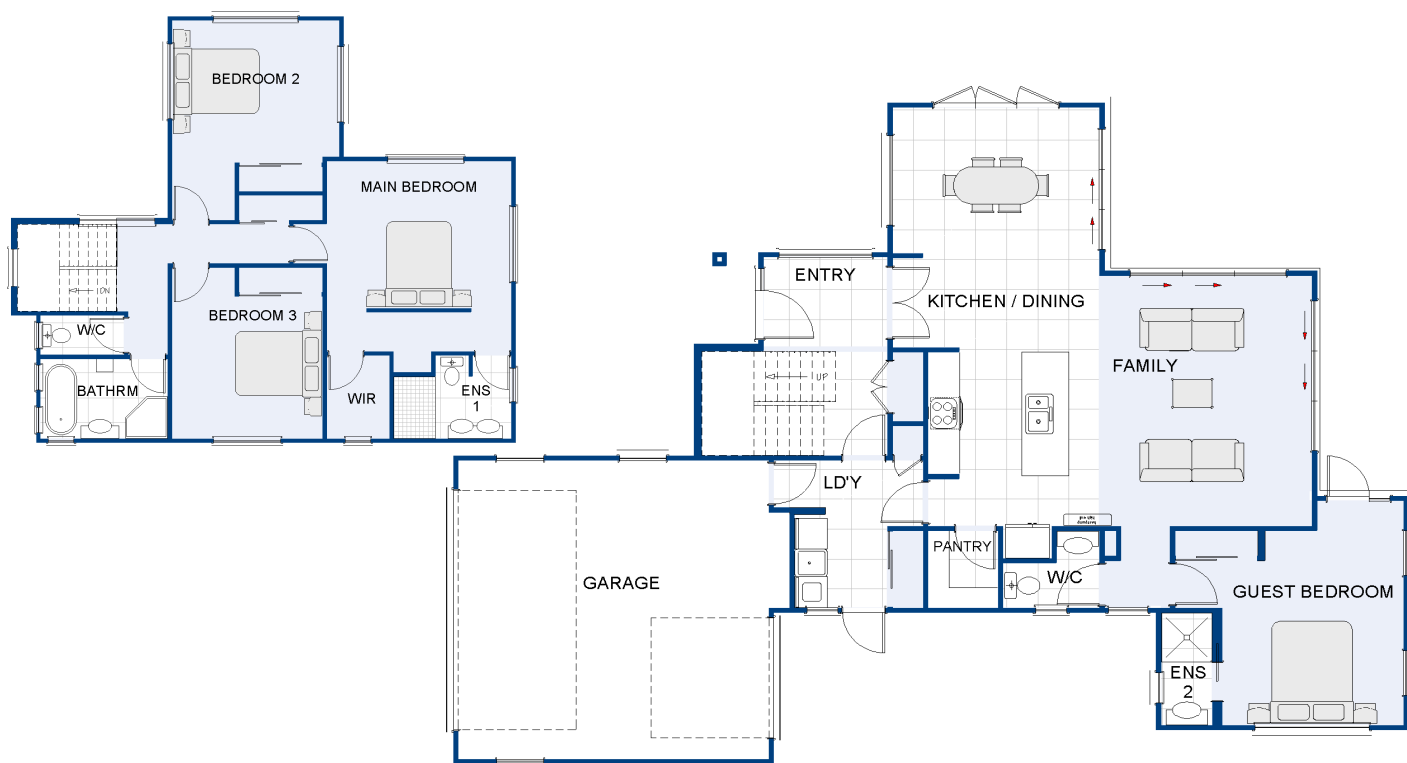


Salisbury 228



Gable



	Living Areas	1
	Bedrooms	4
	Ensuite	2
	Bathroom	2
	Laundry	1
	Garage	2
	Building Length	18.43m
	Building Width	13.26m
	Price Range	\$475k - \$525k
	Size	228m ²

Salisbury 228 features

- Galley kitchen and large walk-in scullery
- Italian tapware
- Guest bedroom and ensuite downstairs
- Ability to park a boat or trailer through the back of the garage
- 10 Year Master Build Guarantee



Mono