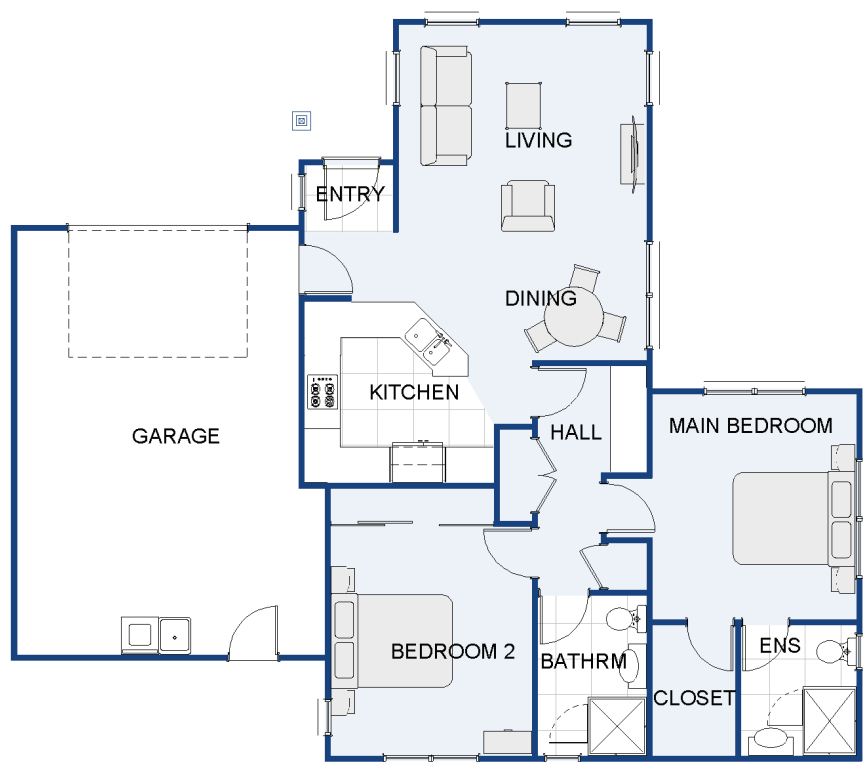


Dover 134



Hip



	Living Areas	1
	Bedrooms	2
	Ensuite	1
	Bathroom	1
	Garage	1
	Building Length	14.33m
	Building Width	12.48m
	Price Range	\$275k - \$325k
	Size	134m ²

Dover 134 features

- Compact design, great value for money
- Future proof and down size for your retirement
- Italian tapware
- Full height windows to allow more natural light
- 10 year Master Build Guarantee



affordable family homes with style

Copyright: These designs and illustrations remain the property of Abode Homes Ltd and may not be used or reproduced in whole or in part without written consent.

